

Broughton History – old photos and maps

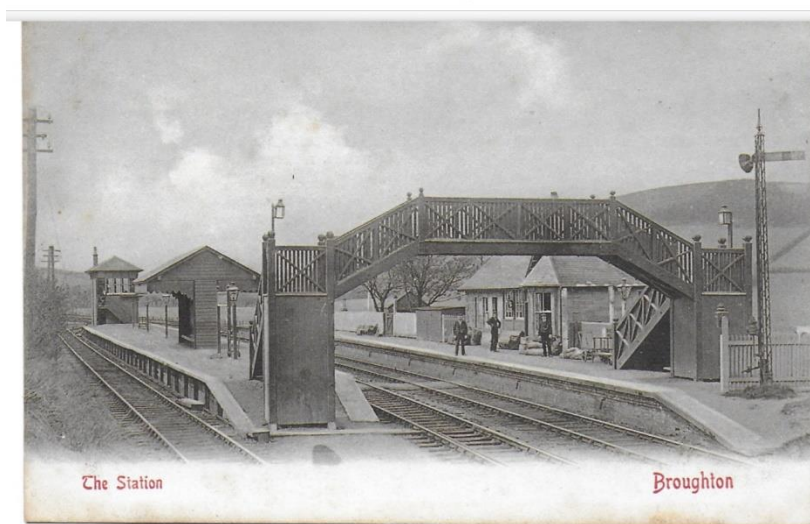
PHOTOS



Street scene near the Station



Village street looking south, with children



Railway station



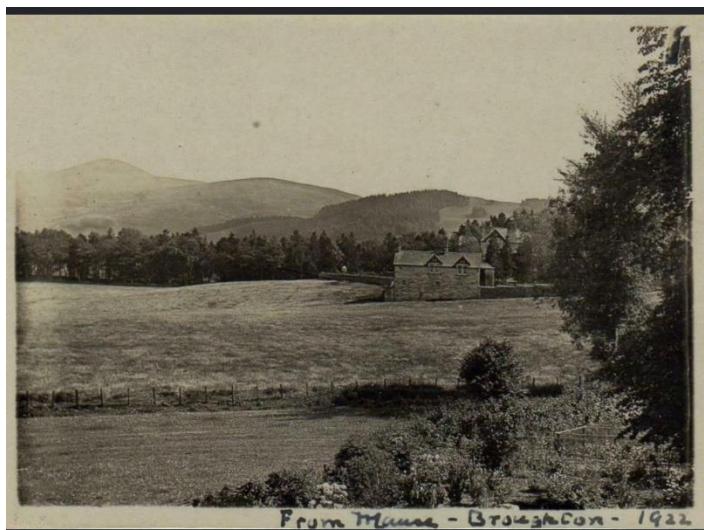
Rachan House



Rachan House



Kilbucho Road



Looking over fields towards Dalnaskhl, 1922



Dalnaskhl, now called Thirlestane House



The Green Mantle



Broughton Old Kirk, showing St. Ninian's cell

MAPS



18th century military map showing Broughton House, Broughton Kirk and Kilbucho Place



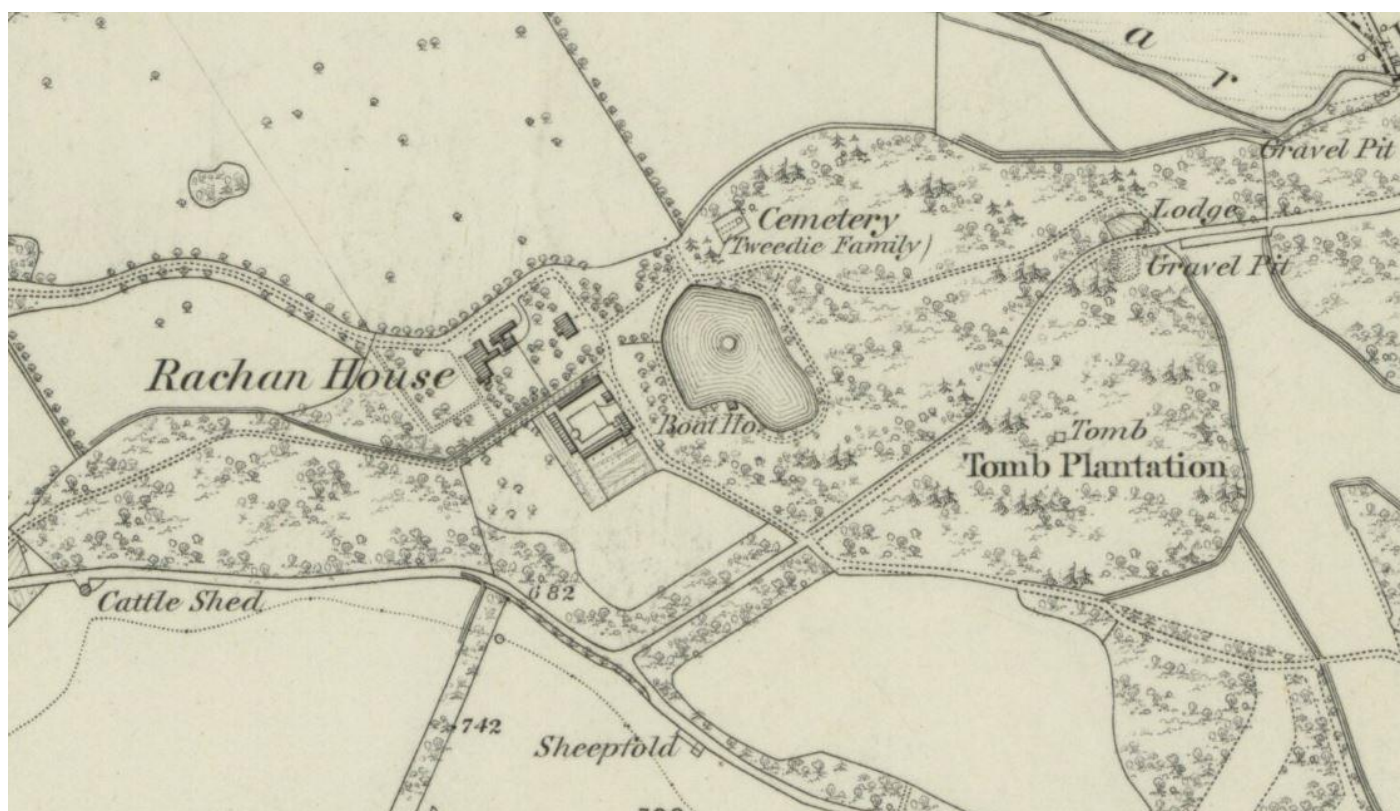
Close-up of previous map, showing Broughton House and Broughton Kirk



Broughton – map of 1776 showing Broughton Kirk and Biggar Road, with some houses in the village (Top = South)



19th century map of Broughton, Rachan Mill, Merlindale and Drumelzier (showing the railway)



Map of 1859 showing the exact location of Rachan House